

Fast Track PPM



Fast Track PPM

Fast Track PPM is a low-cost but fully-featured and scalable maintenance management system.

- Schedule maintenance, service and inspection tasks in a matter of seconds
- Centrally manage and issue work orders
- Save costs and reduce the time staff spend using software
- Provide a faster delivery of service and increase customer service
- Reduce errors throughout the entire maintenance process
- Use powerful reporting functions for better managerial decisions

Intelligent Scheduling

Scheduling planned maintenance tasks has never been easier. Fast Track PPM has been created with end-users in mind and the user-friendly interface and system Wizards make it one of the leading packages available today. The PPM Task Wizard allows users to create maintenance processes within seconds. A few simple clicks of the mouse can have the system scheduling works.

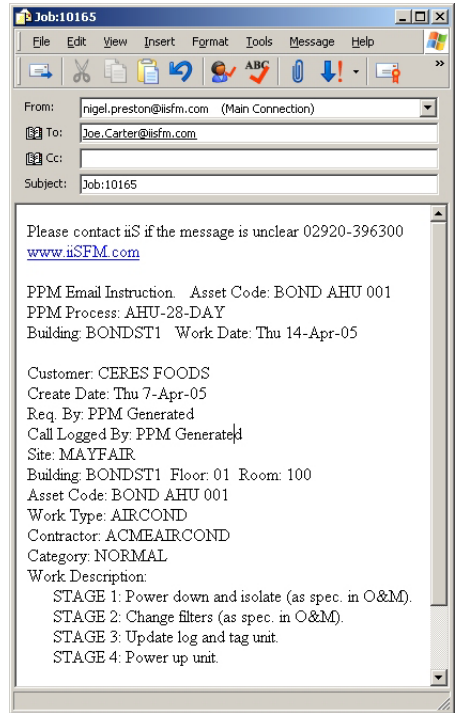
PPM Work Dates are set out in a graphical view to help quickly determine patterns and clashes. Work dates in the graphic view can be filtered by

Building, Equipment Asset, Process and date range, and by using these filters, users can 'zoom in' to parts of the PPM plan and fine tune the actual work dates.

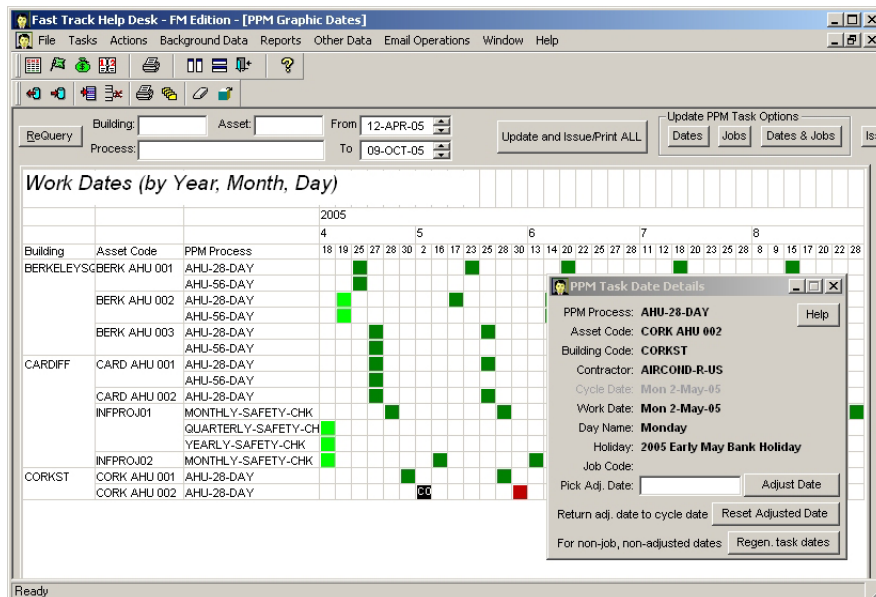
The Task Manager allows users create the perfect maintenance plan and maintain control over PPM processes, including suppression and timing options of individual jobs.

Monitoring

Issued maintenance tasks are automatically brought through to the Work Monitor section. Users can update the status of a job and Work Orders can easily be filtered to view all jobs of a certain type, for a specific building or for a particular contractor. Records are kept in an audit trail and after work is carried out all details are recorded, including meter readings and other test readings.



Jobs can be issued by print, email or both



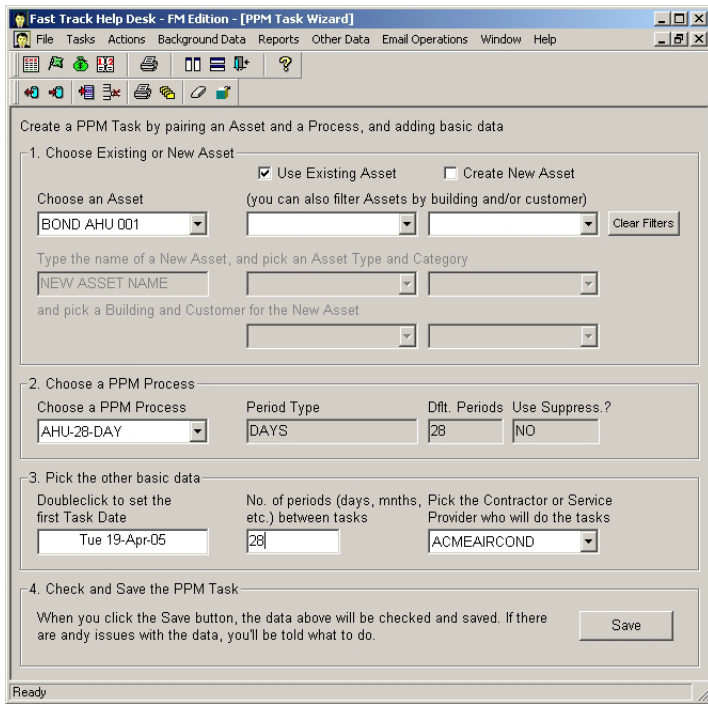
The Graphic Dates view shows work detail and allows date adjustment. Dark colours indicate no job assigned, bright colours have jobs. Red indicates public holiday.

Automatic Issuing

Fast Track PPM can either print Work Orders or automatically email them to employees and contractors. Attachments can be added to emails, such as OEM maintenance manuals, Health & Safety Guidelines, Risk Assessments, etc.

Parts, Labour, Materials and Stock Control

The Work Monitor also manages an extensive array of resources. It contains a record of all parts used on a job and which store they were



The PPM Task Wizard allows new tasks to be set up in seconds. Work dates and conflicts immediately appear in the PPM Graphics Dates view.

taken from. Any ad-hoc materials used can also be saved, along with their cost. The contractor/employee used on the job is selected from a menu and the number of standard hours and overtime can be input. The system automatically calculates the total cost of labour for the job, along with total costs for all parts and materials needed.

Stock levels and inventory are automatically updated with every transaction. Fast Track PPM operates real time stock control so users can see inventory numbers fall after a job and rise once a delivery has been.

Advanced Invoicing

Fast Track PPM will calculate the total cost for a job, including labour, parts and materials used and will automatically create invoices to issue to customers.

Statistics on costs and invoices are held and updated within the system. Users can see the number of completed and closed jobs which have costs along with the number of invoices pending and a running total value of pending invoices.

Reporting

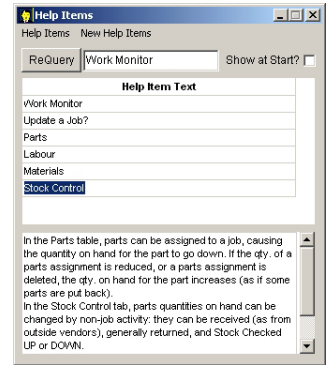
As Fast Track PPM keeps records of all works it is easy for managers to accurately plan for resources

based upon past performance. Analysis of work commitments by resource can be used to reduce peaks and troughs in the maintenance plan, and decisions on life costs, replacement rationale, etc. can be assisted by reviewing the work history and cost history of individual assets.

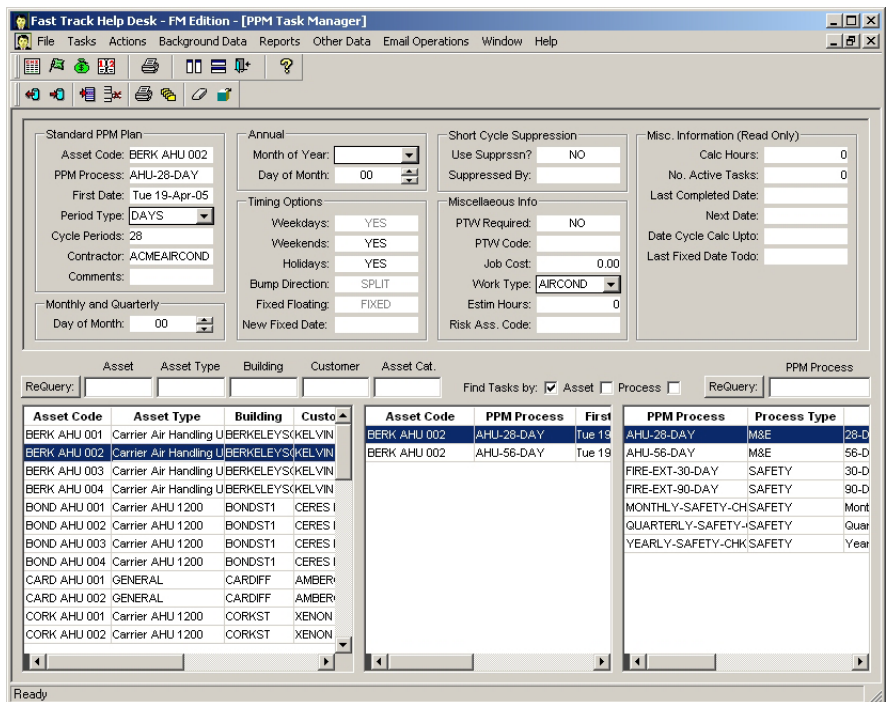
Many performance measurement and analysis reports are provided and the software contains powerful reporting tools which enable users to build their own reports.

Intelligent Help Section

Fast Track PPM includes a customisable help section. The software will give different help items depending on where you are within the system. New help items can be added as and when needed, allowing the help to grow along with the system.



Help is always available



The PPM Task Manager provides for sophisticated interval management, including suppression of coinciding dates (monthly suppressed by quarterly, etc.) and auto-avoidance of weekends, and public holidays.

All information held within the help section can be printed off as a help items book to act as a manual for users and show them how to use the software the way you want them too.

Please contact iiS if you need any more information. www.iiSFM.com